

CHILD CARE RESOURCE & REFERRAL OF CENTRAL IOWA

DALLAS COUNTY 2008 ANNUAL REPORT

www.centraliowachildcare.org

515-993-3813

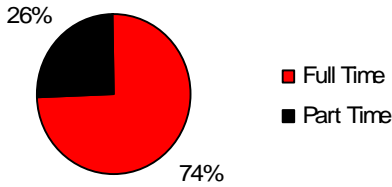
800-722-7619



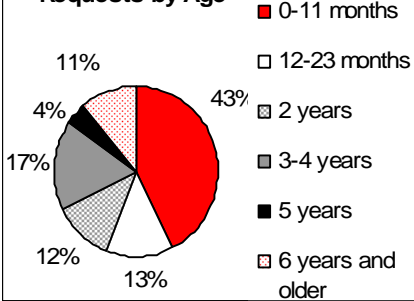
CHILD CARE NEEDS

1,747 referrals to early care and education options were completed in FY 08.

Full Time-Part Time Requests



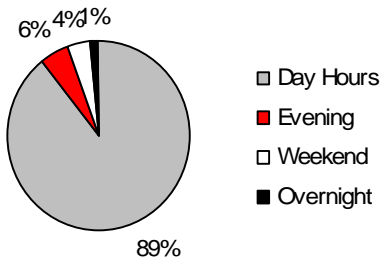
Requests by Age



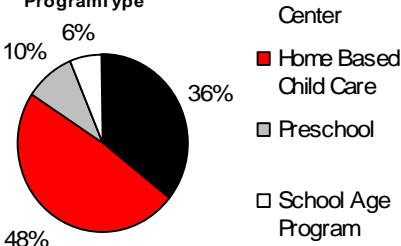
I appreciate your assistance and found your service helpful in locating a good daycare for my daughter, thanks again!

Dallas County Father

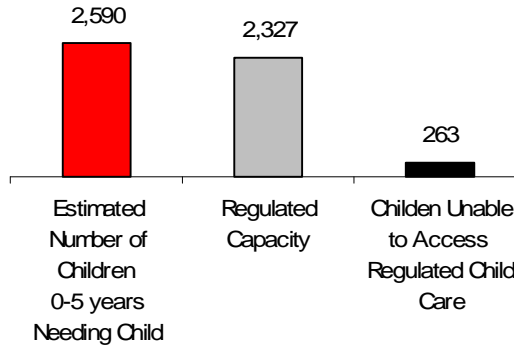
Requests by Shift



Requests by ProgramType



Availability of Regulated Child Care



Quality Child Care: Supply and Demand

An increasing number of parents asked questions about quality child care. Is the program licensed/registered? Are they regulated? What quality indicators should I look for in a child care program?

The referral counselor educates parents on quality child care indicators, the Iowa Quality Rating System (QRS) and others.



Twelve programs are QRS rated, five child care centers/preschools and seven child development homes; six percent of all programs. With an Empowerment funded child care nurse consultant in training, next year programs will receive help with health and safety tools to advance higher in the QRS.

Specific quality indicators include; one NAEYC accredited center, three Head Start, one Shared Vision, and four preschools under Department of Education QPPS standards. There were twenty ChildNet certified child development homes.

47 % of child care homes are registered and agree to meet some minimal standards, but they are not regularly monitored.

To increase the quality of care 191 hours of training were offered to providers. 46% of the classes were series training to help providers move forward in the QRS.

2000 census data indicates the county's population increased 37% , fastest in the state, a 38% in the number of children under the age of eighteen. 70% of children under six years of age had all parents in the labor force, needing child care, but only fourteen percent of all programs met any quality indicators.

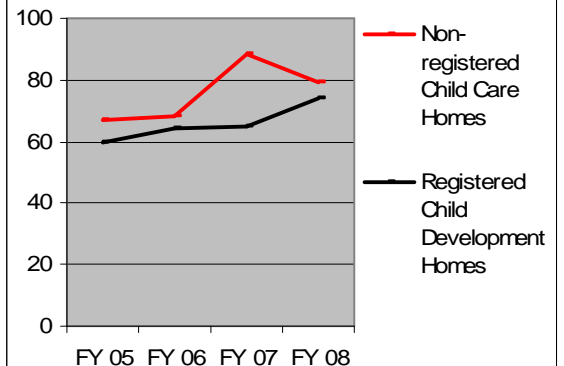
CHILD CARE PROGRAMS

Type of Program	FY 07	FY08
Non-registered Child Care Homes	88	79
Registered Child Development Homes	65	74
Centers	15	15
School Age Centers	11	10

PRESCHOOL PROGRAMS

Types of Programs	FY 07	FY 08
Preschools	19	15
Head Starts	3	3
Shared Visions	1	1
Dept of Education Preschools	NA	14

Home Based Child Care



CCR&R of Dallas County
 ISU Extension
 28059 Fairground Road,
 Adel, IA 50003

515-993-3813 (office)
 515-480-7622 (cell)
 515-993-4281 (fax)



Dallas County
 Empowerment



**Reach for the Stars
 QRS Support System**

Assistance for child care homes, centers and preschools in the quality improvement process through training, consultation and grants to improve the quality of their early childhood programs tied to the **Iowa Quality Rating System**.



On-site consultation was required before all grant purchases were approved.

Blended funding for the quality improvement supports; consultant staff, stipends for professional development training and money for grants purchases from:

**CCR&R of Central Iowa
 Dallas County Empowerment
 United Way Of Central Iowa**



Lending a Helping Hand

- **Betsy Myers**
 Child Care Provider Services Coordinator
 Provides resources and coordinates training for all providers; offers on-site consultation services for centers, preschools & B/A school programs.

- **Carolyn Meyer**
 Home Consultant
 Provides resources and on-site consultation for child development home providers; registered and non-registered.

- **Angie Price**
 Parent Referral Counselor
 Provides resources and free referrals to families searching for quality child care.



“We would like to thank you for giving us the opportunity of earning the...grant...You will never really know how helpful this grant has been for us.”

—Dallas County In-Home Provider

QRS Rated Programs in Dallas County

